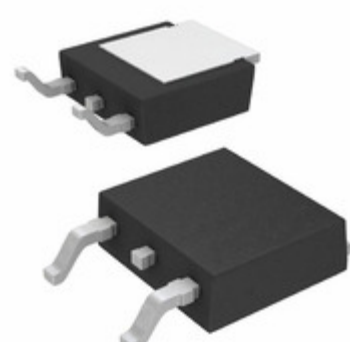


## IRU1010CDTR



**Part Number:** [IRU1010CDTR](#)  
**Manufacturer:** [International Rectifier \(Infineon Technologies\)](#)  
**Description:** IC REG LINEAR POS ADJ 1A DPAK  
**Data sheet:** [IRU1010\(PbF\)](#)

**RoHS Status:** Contains lead / RoHS non-compliant  
**Ship From:** Hong Kong  
**Shipment Way:** DHL/Fedex/TNT/UPS/EMS

Images are for reference only.  
 See Product Specifications for product details.  
 Buy IRU1010CDTR with confidence from Component-World.HK, 1 Year Warranty

[Request For Quotation](#)

### PRODUCT PARAMETER

<b>Part Number</b>	IRU1010CDTR	<b>Manufacturer</b>	<a href="#">International Rectifier (Infineon Technologies)</a>
<b>Description</b>	IC REG LINEAR POS ADJ 1A DPAK	<b>Lead Free Status / RoHS Status</b>	Contains lead / RoHS non-compliant
<b>Quantity Available</b>	3971 pcs	<b>Data sheet</b>	<a href="#">IRU1010(PbF)</a>
<b>Category</b>	<a href="#">Integrated Circuits (ICs)</a>	<b>Voltage Dropout (Max)</b>	1.3V @ 1A
<b>Voltage - Output (Min/Fixed)</b>	2.5V	<b>Voltage - Output (Max)</b>	3.6V
<b>Voltage - Input (Max)</b>	7V	<b>Supplier Device Package</b>	D-Pak
<b>Series</b>	-	<b>Protection Features</b>	Over Current, Over Temperature
<b>Packaging</b>	Tape & Reel (TR)	<b>Package / Case</b>	TO-252-3, DPak (2 Leads + Tab), SC-63
<b>PSRR</b>	70dB (120Hz)	<b>Output Type</b>	Adjustable
<b>Output Configuration</b>	Positive	<b>Operating Temperature</b>	0°C ~ 150°C
<b>Number of Regulators</b>	1	<b>Mounting Type</b>	Surface Mount
<b>Moisture Sensitivity Level (MSL)</b>	1 (Unlimited)	<b>Lead Free Status / RoHS Status</b>	Contains lead / RoHS non-compliant
<b>Detailed Description</b>	Linear Voltage Regulator IC Positive Adjustable 1 Output 2.5 V ~ 3.6 V 1A D-Pak	<b>Current - Quiescent (Iq)</b>	10mA
<b>Current - Output</b>	1A	<b>Control Features</b>	-
<b>Base Part Number</b>	IRU1010CD		

Component-World.com is a Reliable Stocking Distributor of Electronic Components. We specialize in all International Rectifier (Infineon Technologies) series electronic components. We have 3971 pieces of International Rectifier (Infineon Technologies) IRU1010CDTR in stock available now. Request a quote from electronics components distributor at Component-World.com, our sales team will contact you within 24 hours.  
 RFQ Email: [info@Components-World.com](mailto:info@Components-World.com)

### RELATED PRODUCTS

	<b>Part#:</b> <a href="#">IRU1010-33CD</a> <b>Description:</b> IC REG LINEAR 3.3V 1A DPAK	<b>Manufacturers:</b> <a href="#">International Rectifier (Infineon Technologies)</a>	<a href="#">RFQ</a>
	<b>Part#:</b> <a href="#">IRU1010CD</a> <b>Description:</b> IC REG LINEAR POS ADJ 1A DPAK	<b>Manufacturers:</b> <a href="#">International Rectifier (Infineon Technologies)</a>	<a href="#">RFQ</a>
	<b>Part#:</b> <a href="#">IRU1010-33CS</a> <b>Description:</b> IC REG LINEAR 3.3V 1A 8SOIC	<b>Manufacturers:</b> <a href="#">International Rectifier (Infineon Technologies)</a>	<a href="#">RFQ</a>
	<b>Part#:</b> <a href="#">IRU1010-33CSPBF</a> <b>Description:</b> IC REG LINEAR 3.3V 1A 8SOIC	<b>Manufacturers:</b> <a href="#">International Rectifier (Infineon Technologies)</a>	<a href="#">RFQ</a>
	<b>Part#:</b> <a href="#">IRU1010-33CDTR</a> <b>Description:</b> IC REG LINEAR 3.3V 1A DPAK	<b>Manufacturers:</b> <a href="#">International Rectifier (Infineon Technologies)</a>	<a href="#">RFQ</a>
	<b>Part#:</b> <a href="#">IRU1010CSTR</a> <b>Description:</b> IC REG LINEAR POS ADJ 1A 8SOIC	<b>Manufacturers:</b> <a href="#">International Rectifier (Infineon Technologies)</a>	<a href="#">RFQ</a>
	<b>Part#:</b> <a href="#">IRU1015-33CD</a> <b>Description:</b> IC REG LINEAR 3.3V 1.5A DPAK	<b>Manufacturers:</b> <a href="#">International Rectifier (Infineon Technologies)</a>	<a href="#">RFQ</a>
	<b>Part#:</b> <a href="#">IRU1010-33CP</a> <b>Description:</b> IC REG LIN 3.3V 1A 2-UTHINPAK	<b>Manufacturers:</b> <a href="#">International Rectifier (Infineon Technologies)</a>	<a href="#">RFQ</a>
	<b>Part#:</b> <a href="#">IRU1010CY</a> <b>Description:</b> IC REG LINEAR POS ADJ 1A SOT223	<b>Manufacturers:</b> <a href="#">International Rectifier (Infineon Technologies)</a>	<a href="#">RFQ</a>
	<b>Part#:</b> <a href="#">IRU1015-33CM</a> <b>Description:</b> IC REG LINEAR 3.3V 1.5A TO263	<b>Manufacturers:</b> <a href="#">International Rectifier (Infineon Technologies)</a>	<a href="#">RFQ</a>
	<b>Part#:</b> <a href="#">IRU1010-33CY</a> <b>Description:</b> IC REG LINEAR 3.3V 1A SOT223	<b>Manufacturers:</b> <a href="#">International Rectifier (Infineon Technologies)</a>	<a href="#">RFQ</a>
	<b>Part#:</b> <a href="#">IRU1010CYTR</a> <b>Description:</b> IC REG LINEAR POS ADJ 1A SOT223	<b>Manufacturers:</b> <a href="#">International Rectifier (Infineon Technologies)</a>	<a href="#">RFQ</a>
	<b>Part#:</b> <a href="#">IRU1015-33CDTR</a> <b>Description:</b> IC REG LINEAR 3.3V 1.5A DPAK	<b>Manufacturers:</b> <a href="#">International Rectifier (Infineon Technologies)</a>	<a href="#">RFQ</a>
	<b>Part#:</b> <a href="#">IRU1010CPTR</a> <b>Description:</b> IC REG LIN POS ADJ 1A 2-UTHINPAK	<b>Manufacturers:</b> <a href="#">International Rectifier (Infineon Technologies)</a>	<a href="#">RFQ</a>
	<b>Part#:</b> <a href="#">IRU1010-33CSTR</a> <b>Description:</b> IC REG LINEAR 3.3V 1A 8SOIC	<b>Manufacturers:</b> <a href="#">International Rectifier (Infineon Technologies)</a>	<a href="#">RFQ</a>
	<b>Part#:</b> <a href="#">IRU1010-33CPTR</a> <b>Description:</b> IC REG LIN 3.3V 1A 2-UTHINPAK	<b>Manufacturers:</b> <a href="#">International Rectifier (Infineon Technologies)</a>	<a href="#">RFQ</a>
	<b>Part#:</b> <a href="#">IRU1010CP</a> <b>Description:</b> IC REG LIN POS ADJ 1A 2-UTHINPAK	<b>Manufacturers:</b> <a href="#">International Rectifier (Infineon Technologies)</a>	<a href="#">RFQ</a>
	<b>Part#:</b> <a href="#">IRU1010CS</a> <b>Description:</b> IC REG LINEAR POS ADJ 1A 8SOIC	<b>Manufacturers:</b> <a href="#">International Rectifier (Infineon Technologies)</a>	<a href="#">RFQ</a>
	<b>Part#:</b> <a href="#">IRU1010-33CYTR</a> <b>Description:</b> IC REG LINEAR 3.3V 1A SOT223	<b>Manufacturers:</b> <a href="#">International Rectifier (Infineon Technologies)</a>	<a href="#">RFQ</a>
	<b>Part#:</b> <a href="#">IRU1015-33CMTR</a> <b>Description:</b> IC REG LINEAR 3.3V 1.5A TO263	<b>Manufacturers:</b> <a href="#">International Rectifier (Infineon Technologies)</a>	<a href="#">RFQ</a>

### Related keywords for IRU1010CDTR

International Rectifier (Infineon Technologies)	IRU1010CDTR distributor	IRU1010CDTR supplier	IRU1010CDTR price
IRU1010CDTR	IRU1010CDTR download datasheet	IRU1010CDTR datasheet	IRU1010CDTR stock
buy IRU1010CDTR	International Rectifier (Infineon Technologies)	International Rectifier IRU1010CDTR	Infineon Technologies IRU1010CDTR
	IRU1010CDTR	International Rectifier (Infineon Technologies)	IR (Infineon Technologies) IRU1010CDTR
		IRU1010CDTR	